

Figure 2 Level of education, Sukh stations, Bin Qasim Town (n = 1634)

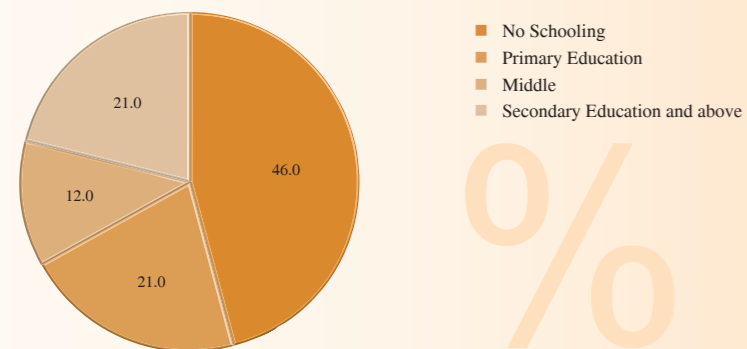


Figure 3 Ethnic groups, Sukh stations, Bin Qasim Town (n=1634)

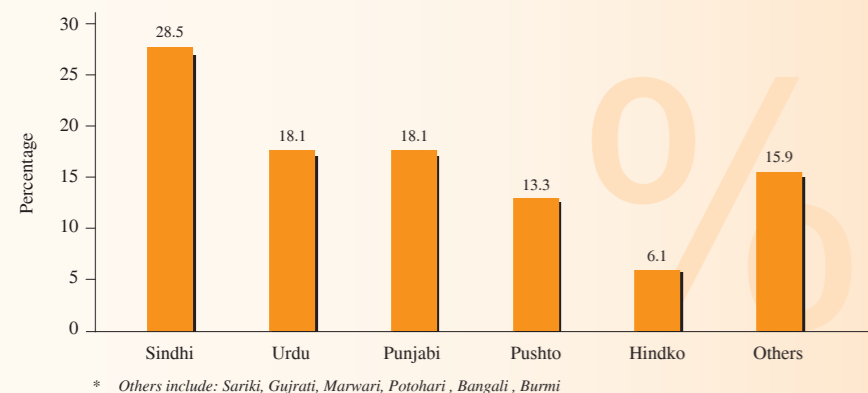
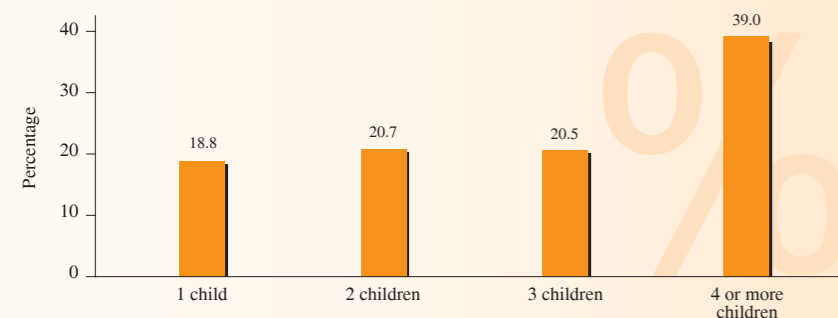


Figure 4 Percent of women according to number of living children, Sukh stations, Bin Qasim Town (n = 1510)



Recommendations

The infrastructure of reproductive health care services is dominated by TBAs. Available maternity homes and family planning services are not sufficient to cater the needs of the communities. There is a high scope for making FP services available through building linkages with government and private sector.

Adequate supply and stocks of good quality contraceptive method mix will result in increased uptake; decrease in discontinuation rates and improve compliance towards use of modern contraceptive methods. This will also improve the quality of life for women, children and families.

Strategies are required to change behavior of communities towards early marriage, spacing of first birth, prevention of unplanned pregnancy, birth spacing and use of modern methods of contraception. Focus should be on young women with low parity.

Vulnerable groups such as certain ethnic and minority groups, young (15-29 years), illiterate and poor women should be provided with safety nets for provision of family planning and maternal and child health services.

SUKH IMPLEMENTING PARTNERS



For further information you may contact at Aman Foundation:
UAN: +92 (21) 111-111-823



SUKH INITIATIVE

Baseline Assessment

Fact Sheet 2015

Sukh Stations
Bin Qasim Town, Karachi

Sukh Initiative is implemented at ten stations located in four towns of Karachi, i.e. **Korangi, Landhi, Bin Qasim** and **Malir**. There are 3 stations in Bin Qasim, Korangi has 4 stations, 2 stations in Landhi, and 1 station in Malir town.

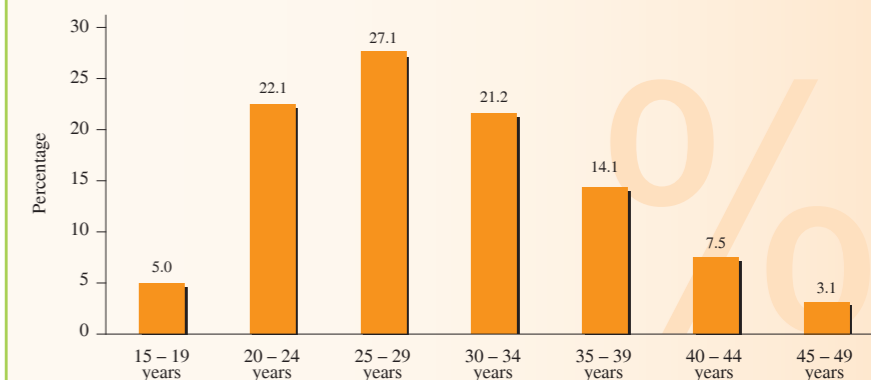
It is a five-year program (2013-2018), intending to increase the use of modern contraceptive methods and reducing unintended pregnancies amongst one million underserved population of Karachi, Pakistan.

A total of **1634** married women of reproductive age were interviewed

Socio-demographic characteristics

- More than 50% of married women are youth (15-29 years)
- 46% of married women have no formal education
- Sindhi speaking is the most prevalent ethnic group
- 39% of married women have 4 or more children
- Teen age marriage and pregnancy exist

Figure 1 Percent of women in reproductive age groups, Sukh stations, Bin Qasim Town (n = 1634)



Current Modern Contraceptive Use

- Unplanned pregnancies exist in the community
- Knowledge of modern contraceptive methods is high but use is low
- More than 50% of married women have ever used any modern contraceptive method
- Mostly women in the age group of 30 years or above with four or more living children reported current use of modern contraceptive methods
- Commonly used contraceptive methods are condom, female sterilization and injection
- Current use of long-term modern contraceptive methods such as IUD and implant is low

Figure 5 Percent of married women with unplanned pregnancies, Sukh stations, Bin Qasim Town (n = 218)

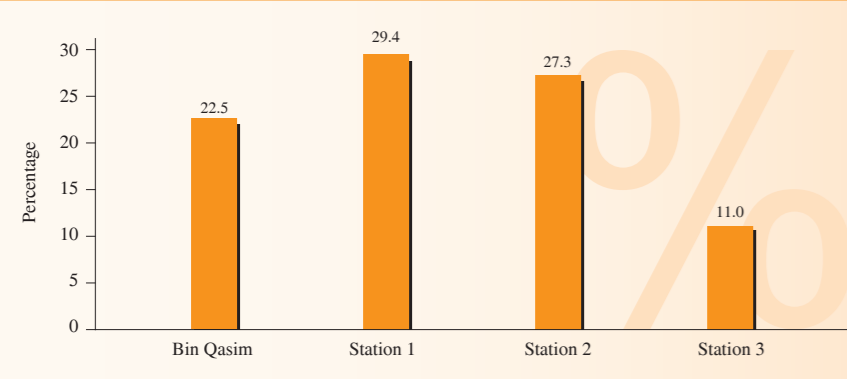


Figure 6 Percent of women with knowledge, ever use and current use of modern contraceptive methods, Sukh stations, Bin Qasim Town (n = 1634)

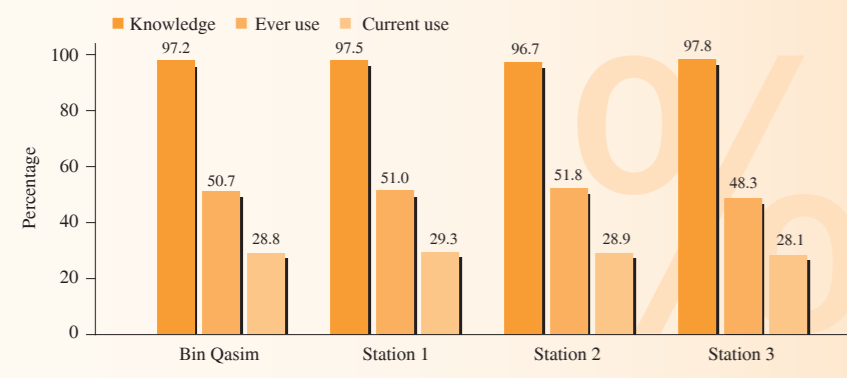


Figure 7 Percent of current modern contraceptive users by age group, Sukh stations, Bin Qasim Town (n = 470)

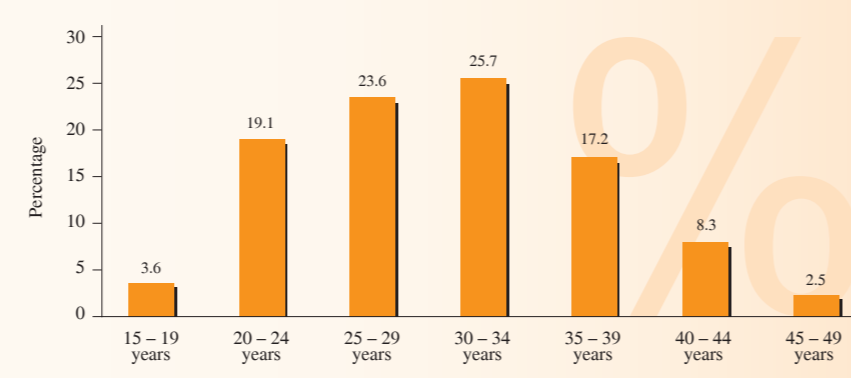


Figure 8 Percent of current modern contraceptive users by education, Sukh stations, Bin Qasim Town (n = 470)

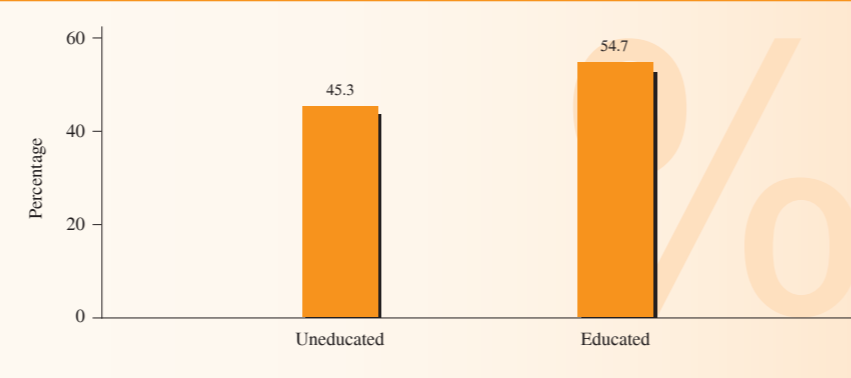


Figure 9 Percent of current modern contraceptive users by parity, Sukh stations, Bin Qasim Town (n = 470)

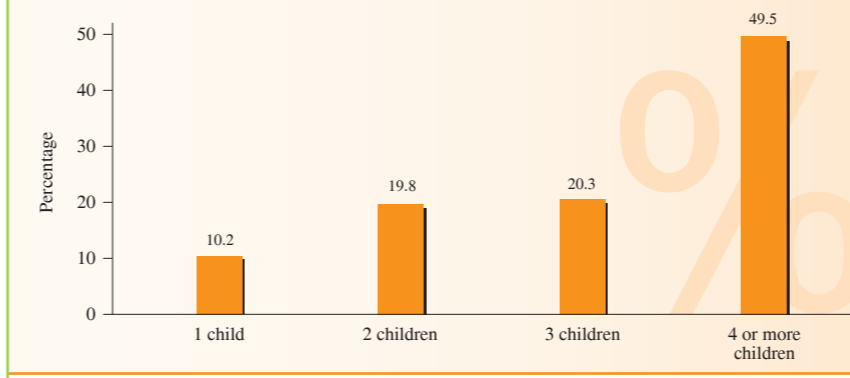


Figure 10 Percent of current modern contraceptive users by ethnicity, Sukh stations, Bin Qasim Town (n = 470)

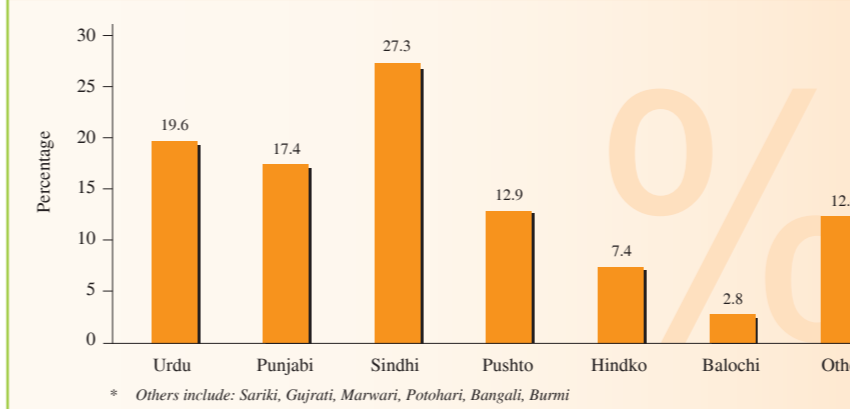
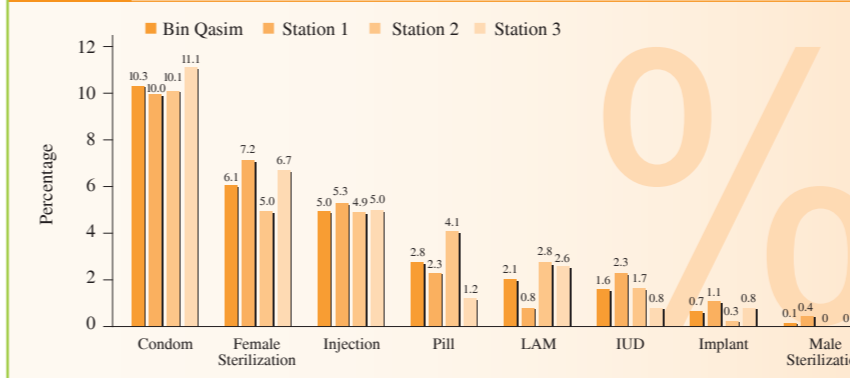


Figure 11 Percent of current modern contraceptive user by type of method, Sukh stations, Bin Qasim Town (n = 1634)



MCH and FP Services (Private Sector)

- Maternity homes and TBAs are the main cadres of MCH and FP services
- Exclusive Family Planning facilities/clinics comprise 3% of all facilities providing reproductive health care services
- Injections, condoms and pills are the contraceptive methods provided by most of the health facilities
- Provision of long-term contraceptive methods is low

Figure 12 Types of health facilities providing maternal care and family planning services, Sukh stations, Bin Qasim Town (n = 95)

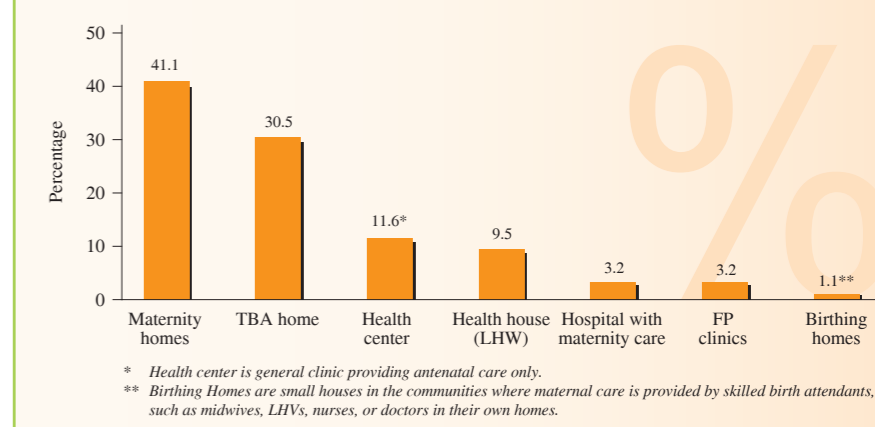


Figure 13 Percent of health facilities providing modern contraceptive methods, Sukh stations, Bin Qasim Town (n = 69)

